

OPERATOR'S MANUAL/PARTS LIST

BG-660/BG-110 MOBILE LIFT TABLE



ACTUAL PRODUCT MAY NOT APPEAR EXACTLY AS SHOWN

WARNING

Do not operate or service this product unless you have read and fully understand the entire contents of this manual. Failure to do so may result in bodily injury or death.

BLUE GIANT[®]

STARTING FROM MARCH 19, 2024 12:37 PM / SERIAL # 0.

ISSUE DATE: MARCH 19, 2024 REV. 1.1 (PART # 038-1216EO)

TABLE OF CONTENTS

1. SAFETY PROCEDURES	3
2. OWNER'S PURCHASE RECORD	3
3. EXCLUSION OF LIABILITY	3
4. WARRANTY	4
5. CHECK SHIPMENT BEFORE ASSEMBLY AND/OR USE	4
6. RANGE OF USE	4
7. OPERATION CONDITIONS	5
8. BG-660/BG-1100 SPECIFICATIONS	5
9. POINTS FOR ATTENTION	5
10. ASSEMBLY METHOD	6
11. STRUCTURE DIAGRAM AND SCHEMATIC DIAGRAM	6
12. USAGE AND PERFORMANCE:	8
13. OPERATING INSTRUCTIONS	8
14. MAINTENANCE AND SERVICING	10
15. TROUBLESHOOTING	10
16. BG-660/BG-1100 HARDWARE	11

DEALER INFORMATION

Name:

Contact:

Telephone:

1. SAFETY PROCEDURES

1. Do not operate this lift table unless you have been trained and authorized to do so.
2. Do not operate this lift table until you have read and understood all of the safety information and instructions contained herein and on the lift table.
3. Do not operate this lift table until you have checked its condition. Give special attention to wheels, controls and lifting systems, including steering mechanism, and safety devices.
4. Report the need for lift table repairs to your supervisor immediately and do not operate lift table until repairs are made. Neglect may cause a minor repair to become a major service problem and cause the lift table to become unsafe.
5. Do not load lift table beyond capacity shown on serial name plate on lift table.
6. This equipment is designed for evenly centered loads with forks completely supporting the load. Off-centering of loads can result in a dangerous operating condition and may cause damage or injury.
7. Always look in direction of travel. Use caution when visibility is obstructed by load.
8. Extreme caution must be used when handling loosely stacked/packaged loads.
9. Watch swing clearance when turning near walls, racks, pillars or other obstacles.
10. Start, stop, change direction and travel smoothly. Slow down for turns and on uneven or slippery surfaces that cause lift table to slide or tip. Be aware that the lift table behaves differently without a load than with a load.
11. Observe applicable traffic regulations. Yield right of way to pedestrians.
12. Do not ride on this equipment.
13. Do not carry passengers or lift personnel.
14. Before you leave the lift table, fully lower lifting mechanism.

2. OWNER'S PURCHASE RECORD

OWNER'S PURCHASE RECORD

Please record information for future inquiries and to validate warranty.

Dealer:	Date in Service:
	Number of Units:
Owner's Name:	Order Number:
Serial Number:	Year of Construction:

3. EXCLUSION OF LIABILITY

The manufacturer assumes no liability for damage or injury to persons or property which has occurred as a result of defects or faults in the lift tables delivered or due to incorrect use. The manufacturer also assumes no liability for lost profits, operating down times, or similar indirect losses which the buyer has incurred. Damage to third parties, irrespective of its nature, is not subject to compensation.

The operating instructions are not subject to notification of amendment. The descriptions and illustrations included in our operating instructions and replacement parts list are not binding.

In the interests of further development, we reserve the right to make any changes at any time to the modules, components and accessories

which we deem to be expedient, or for technical reasons, while retaining the essential features of the models described here.

4. WARRANTY

To validate warranty on recently purchased equipment, please complete and submit your information with our online Warranty Registration at www.bluegiant.com.

For more information about Blue Giant Warranty Support, please contact your local Blue Giant Equipment dealer, representative or authorized partner near you. You may also visit www.bluegiant.com or phone 1.905.457.3900.

NOTE: All products must be registered to qualify for warranty.

5. CHECK SHIPMENT BEFORE ASSEMBLY AND/OR USE

The lift table is to be carefully checked at the manufacturer's plant before shipment.

In order to ensure that no damage has occurred during transport, the lift table should be checked upon receipt for transport damage and to ensure correct operation. Damage due to transport is to be listed on the signed copy on the freight document. The freight forwarder must be notified of any damage within 48 hours. Damaged lift tables must not be put into use.

LOADING SPECIFICATION

The lift table is designed for the horizontal transportation of loads on a level, fixed base. The load must be evenly distributed on pallets or similar receptacles. The ideal loading mode is that the gravity center of heavy goods is at the central position of the fork. The maximum load-carrying capacity is shown on the appropriate designation plate and on the load sticker on the lift table. When there exists defective load, the rated carrying capacity shall be reduced. If the load on the table is one sided, there is a risk of the table bending or the load slipping off. In order to preserve the wheels and chassis the lift table must not be driven over very uneven ground.

MAXIMUM INCLINES OR DECLINE GRADES

The lift table is equipped with a permanently set pressure-limiting valve which permits a maximum load of 5 % of the nominal load. The screw plug on the pressure control valve is secured so as to avoid inappropriate manipulation from the operating personnel. In order to avoid damage to the goods being transported and the means of transport, the load must be supported evenly. If the load is unevenly distributed the pressure limiting valve will not function. When driving on down-grades the load is to be secured to prevent it from slipping or sliding off the lift table, (e.g. additional operating personnel). In addition to this, only lift tables with a parking brake are to be used on down-grades up to approx 6 %. Journeys on inclines or down-grades of more than 6 % are always to be avoided. Safe transport cannot be guaranteed when the center of gravity of the load has altered.

SAFETY WITH TALL LOADS

Transporting with tall loads changes the center of gravity of the load so unfavorably that the complete lift table including the load, goes out of control and may overturn on a curve. Loading, (e.g. onto a lift table or mobile loading ramps) should be regarded in particular as likely occasions for accidents. During such activities the lift table is to be secured with particular care. Conveying persons or using the lift table as a form of roller skate is not permissible. Foodstuffs are only to be transported in packed form. Direct contact with the lift table is to be avoided. The accident prevention regulations for industrial lift tables and the safety regulations and accident prevention regulations applicable to the user are also to be complied with.

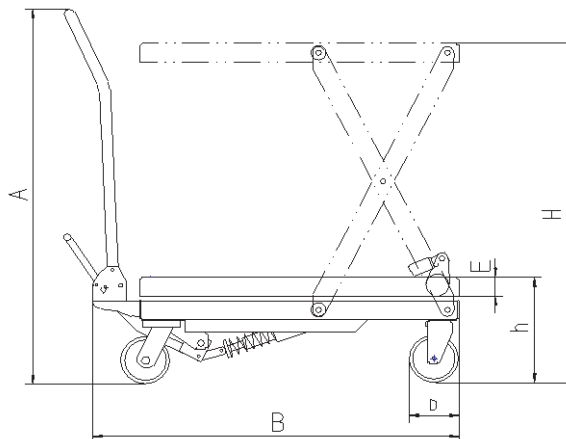
6. RANGE OF USE

BG mobile series lift table is a high lifting tool which is suitable for short distance transportation and lifting cargos. Besides, it can also be used as station facilities in workshops. The lift table depends on hydraulic pump for lifting power, which decreases labor intensity and improves working efficiency.

7. OPERATION CONDITIONS

- a. It should be operated on the solid and flat ground.
- b. The ambient temperature for operation should be -20~40°C.

8. BG-660/BG-1100 SPECIFICATIONS



Specification / Model	BG-660/BG-1100
Capacity	300kg (660lbs)/500kg(1100lbs)
Max. lift height H mm	900
Min. height of table h mm	280
Table size L×C×E mm	815×500×50
Handle height A mm	996
Overall length B mm	942
Foot pedal cycles to max. height	≤32/≤45
Wheel diameter D mm	127
Working volume of oil cylinder ml	164
Oil capacity ml	250
Service weight	75Kg (165 lbs)/85Kg (187 lbs)

9. POINTS FOR ATTENTION

1. Read the instruction carefully before operation and get to know the performance and operation requirements of the lift table. No unauthorized use.
2. Wear the working clothes, safety shoes and gloves when operating the table.
3. Every accessories the lift table needed is purchased from the specified suppliers and manufacturers in order to using the lift table normally and safely.
4. After the vehicle overhaul and any main parts replacement, confirmation of vehicle safety before returning for use..
5. Only designated trained and qualified personnel should operate and use of lift tables.
6. Do not overload the hydraulic lift table and only operate it within the rated load. Overloading will cause damage to the hydraulic lift table and human body.
7. It is forbidden for operators to stand or sit on the table to work.
8. Don't put the hands or feet under the lowering table.
9. Use the brake on the lift table when loading goods, to prevent it from moving.
10. Off-set loading is forbidden when loading goods, and the goods should be distributed uniformly on the whole table.
11. Loose or unstable goods are not permitted to be loaded.
12. Don't leave goods on working table for a long time.

13. The lift table can't be moved when goods are being lifted.
14. The lift table can only be moved on flat and hard ground, it is forbidden to be used on sloping ground or rugged ground;
15. When putting goods on table which has been hoisted, the weight of goods should be within rated load, and the goods should be loaded lightly. (Safety valve only works in hoisting process, if the lift table has been hoisted, and overweight goods are on it, the safety valve can't work. The lift table may be damaged.)
16. When loading and unloading goods on hoisted table, don't drag goods in cross direction, which may cause serious off-set loading and make lift table turn over.
17. When maintaining and repairing lift table, stand (or maintenance) bar should be used to support fork arm in order to prevent table from falling (there should be no goods on table), and provide greater safety in maintenance and repairing.
18. Please operate strictly according to "notes (warning)", otherwise it will bring damage to lift table and human body.

10. ASSEMBLY METHOD

BG-660 and BG-1100 type lift tables are folding type. Only if the handle is pulled up, this series lift table can be operated. The installation of pedal rod refers to the Fig 2.

BG-770D type lift table is dismantled when ex-factory, they might be fixed together by the users when using. The assembly procedure is:

Handle installment: Fix the handle with a bolt M12×30, a spring washer 12 and a flat washer into the mounting hole at the lift table frame, then tighten the bolt with a wrench.

Pedal rod installment: place the pedal rod(23) into the mounting hole at the square bar(20) as shown in fig.(1), then tighten it with a screw(22); then put a flat washer (7) and a spring washer(8) and lock with a nut(9).

11. STRUCTURE DIAGRAM AND SCHEMATIC DIAGRAM

Cylinder figure (1)

Assembly figure (2)

Hydraulic schematic diagram see figure (3)

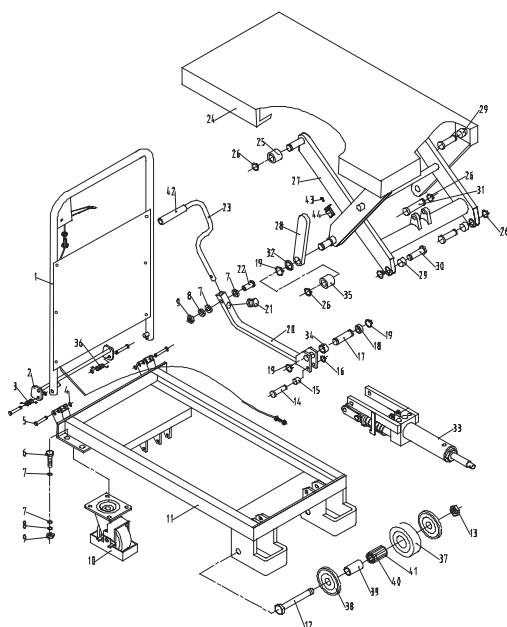


Fig. 2

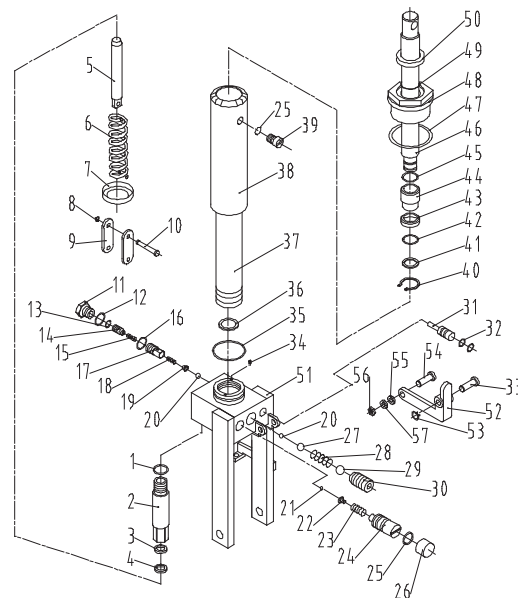


Fig. 1

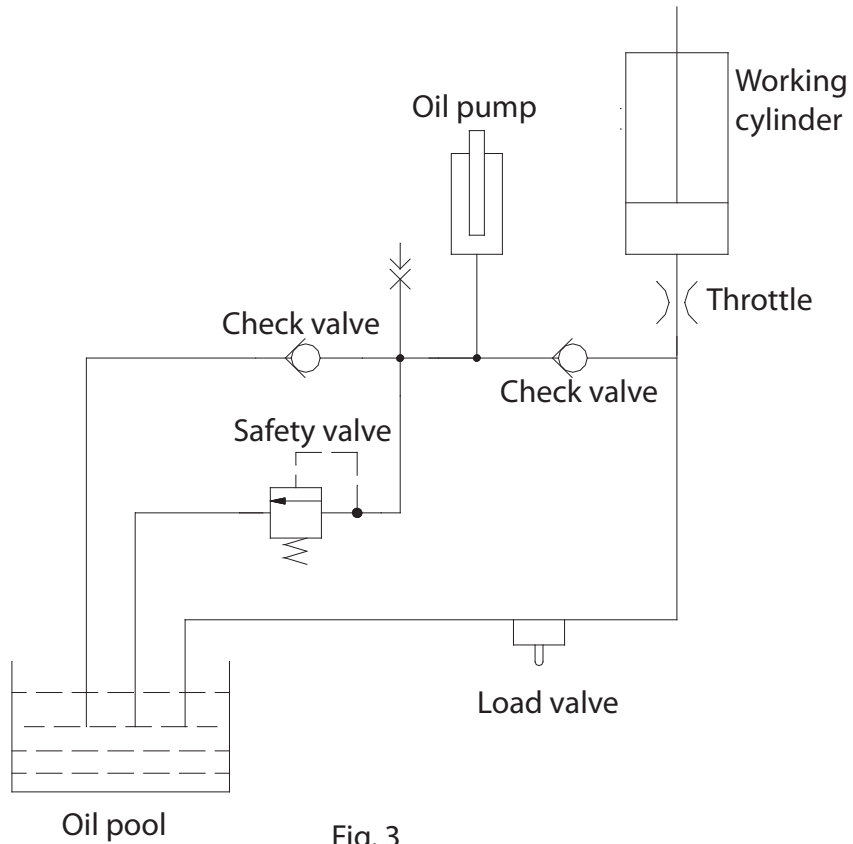


Fig. 3

Principle specification

1. The restriction chock and the constant pressure overflow valve leak oil at the same when no-load, the no-load vehicle descend faster, and it can meet the customers the demand.
2. When the load is more than 50kg, the system pressure is 8MPa, the constant pressure overflow valve closes automatically, the hydraulic oil leaks through the restriction chock, the vehicle descend slowly, and this agrees with the safety standards.

12. USAGE AND PERFORMANCE:

1. The load lifting and lowering is driven by the hydraulic pump, and the traveling of lift table is manually controlled.
2. The lift table will be lifted when the foot pedal is pumped.
3. The table will be lowered when the knob release is pulled.
4. Please make the brake is disengaged before moving the lift table.

13. OPERATING INSTRUCTIONS

⚠ CAUTION

- Fully read and understand the lift operation.
- Only trained personnel should operate or service this equipment.
- Always park the mobile lift table after use.
- Conduct routine inspections and maintenance. Failure to do so could cause equipment damage and or personal injury.
- Never operate a broken or damaged dock leveler. Repair immediately by a qualified service technician.
- Always contact your Blue Giant Dealer immediately if a malfunction occurs.
- Do not enter the area under the table.
- Loose or unbalanced loads are dangerous.
- While transferring loads, be aware of potential fall risks from table.
- Practice safe load transfer methods. If you do NOT understand the complete table operating procedure and safe load transfer methods, refer to the Owner/Operator regarding local regulatory/jurisdictional and facility requirements.

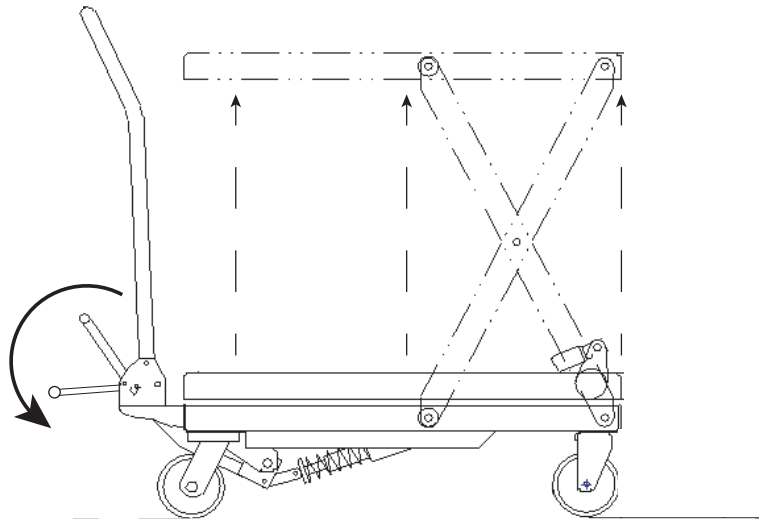
NOTICE

- Always keep the work area clean and free of litter.
- Always clean all side openings of dirt and debris.
- Always clean up dry and liquid spills immediately after they occur.
- If a procedure is not clearly defined in this manual, contact your Blue Giant Dealer.

Manual Hydraulic

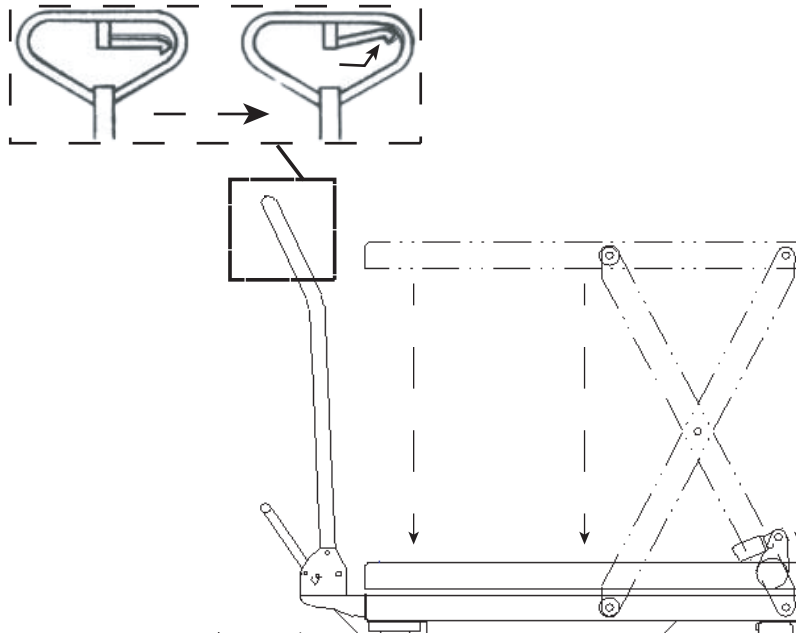
Raising the table

1. Verify that the brake is engaged.
2. Step on the foot lever for several times to raise the working table.



Lowering the table

1. Lift the handle knob upward slowly, and open the one-way valve to make the working table descend slowly.

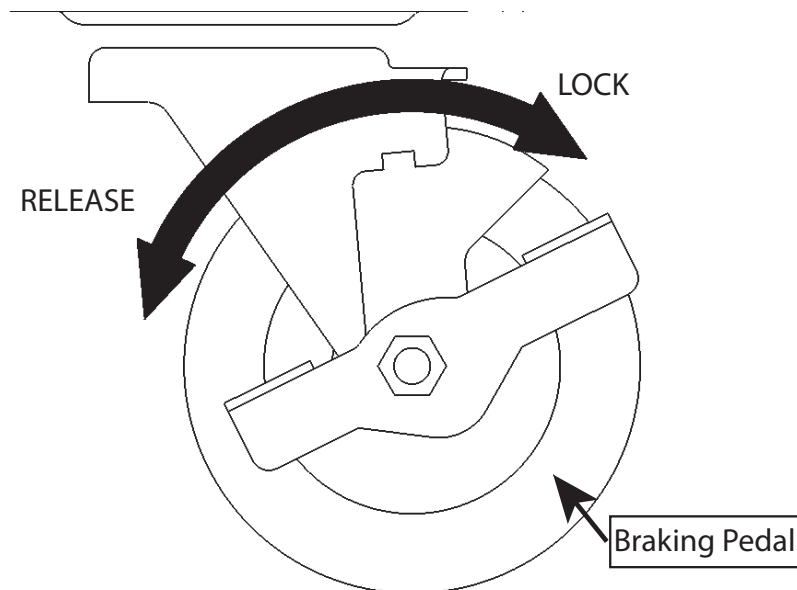


2. Release the brake before moving the lift table.

Brake operation

Do not raise nor lower table without brake in operation. Do **NOT** put any part of the foot and body on the brake.

1. Press lock tab on the Brake Pedal to engage braking.
2. Press the opposite tab on the Brake Pedal to disengage braking.



14. MAINTENANCE AND SERVICING

DANGER

- Failure to properly secure the mobile lift table prior to working underneath it may result in bodily injury or death.
- Engage the Maintenance Strut (or bar) before working. If it cannot be successfully engaged, contact your Blue Giant Dealer.

WARNING

- Post safety warnings and barricade work area at dock and ground level. Notify all affected personnel that work is being performed on the unit and follow proper lock-out procedure.
- If applicable, verify that power to the unit has been completely cut off and cannot be turned back on accidentally, as per OSHA requirement.
- Head protection and other applicable PPE is recommended when working under or around the raised table.
- Maintenance Strut must be used when working under the lift. (i.e. more than cleaning or visually inspecting)
- Install Maintenance Strut only when the unit is sufficiently raised.
- Do not stand in the pathway of the mobile lift table during the disengagement process in case the dock falls unexpectedly.

CAUTION

- It is recommended that a retrieval tool be used when retrieving or replacing the Maintenance Strut from its stored position.
- It is recommended that this procedure be performed with assistance.

It is very important to conduct necessary maintenance and upkeep so as to prolong the service life and safety of the lift table. Please check the lift table before operation according to the following items:

1. Is there any distortion and bending of various positions of the lift table.
2. Check the brake of the lift table and the wearing condition of the wheels.
3. Check oil leakage in the hydraulic system.
4. Add or fill lubricant to each friction surface before daily operation.
5. If there is any failure, the lift table should be repaired at once, only then it can be put into use again.
6. Change the hydraulic oil every twelve months, choose the following or close brand hydraulic oil according to the climate conditions of different areas:
 - a. YBN32 is adaptive under the environment temperature of -10~+40°C;
 - b. YCN32 is adaptive under the environment temperature of -20~+40°C.

1. Replacement of oil

Using a wrench screw out 11 # seal screw jack; Will hold the handle knob; Unscrew the oil plug screw # 39 add hydraulic oil;

Using a wrench screw out oil plug screw # 37 in hydraulic oil

8,1#,3#,4#,16#,25#,26#,32#,35#,36#,42#,43#,45#,48#,49# of Pic 1 jack and 5#,6#,8#,10#,12#,13#,29#,41#,47# of jack is rubber, PU, nylon seal. Its general storage period is 2 years, over the period may be aging, will affect the use of performance. Please change in time.

15. TROUBLESHOOTING

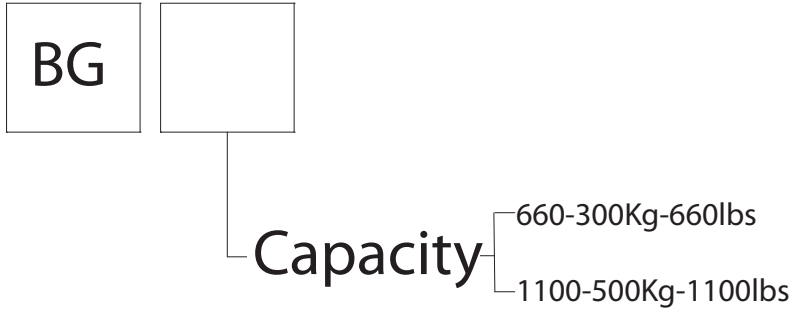
Faults	Causes	Trouble shooting
The lift table can not be raised or the lifting height is not enough.	<ol style="list-style-type: none"> 1. Steel ball (20) of the check-valve is not closed down. 2. Firing pin (31) withstands the steel ball (20). 3. Short of hydraulic oil. 	<ol style="list-style-type: none"> 1. Clean the valve opening and change the steel ball (20). 2. Adjust the tension rate of the steel wire rope to make firing pin at suitable place, and add or fill lubricant to the pin roll (33) 3. Add enough hydraulic oil.

Faults	Causes	Trouble shooting
The table-board rises then descends.	<ol style="list-style-type: none"> Steel ball (20) (27)(21)of the check-valve is not closed down. Firing pin (31) withstands the steel ball (20). 	<ol style="list-style-type: none"> Clean the valve opening and change the steel ball (20)(27)(21). Adjust the tension rate of the steel wire rope to make firing pin at suitable place, and add or fill lubricant to the pin roll (33)
The table-board does not descend	The travel of the firing pin (31) is not enough to open the steel ball (20).	Adjust the tension rate of the steel wire rope to make firing pin at suitable place, and add or fill lubricant to the pin roll(33).
Oil leakage at firing pin.	The O- ring (32) is damaged.	Change the O- ring (32).
Oil leakage at pump (2), pump core (5) and piston rod (44).	The seal ring (1)(3)(47)(49) are damaged.	The seal ring (1)(3)(47)(49) are damaged.

16. BG-660/BG-1100 HARDWARE

Foreword

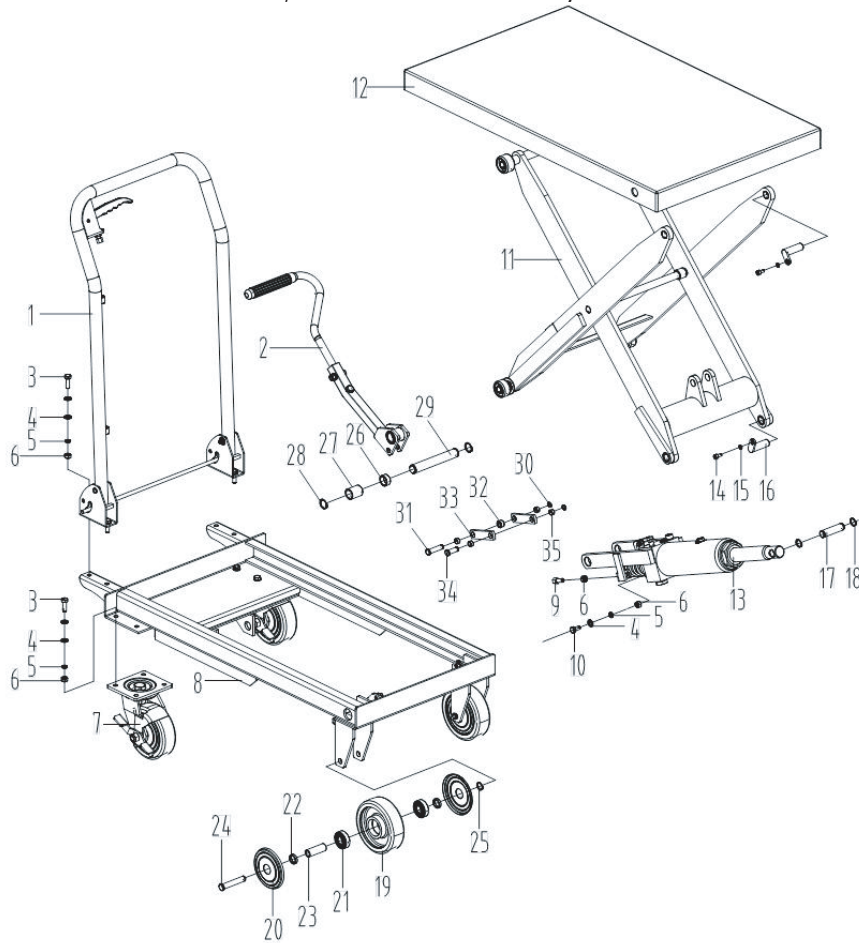
- Usage
This manual lists the components of BG-660 OR BG-1100 hydraulic single scissor lift table, including its handle, lift table frame, fork arm, jack and so on.
- How to book a component
When you need to book any component, specify in your order the lift table model, series number, quantity, part material number, and the name of the component. If you have any question concerning the material number, please inform your agent, and make complete supplementary instructions for the component in need.
- Manual Content
This part manual includes drawings of the whole assembly or each part of the lift table. These drawings include standard components and additional components.
Each drawing lists out the component number and name, and additional information is provided.
Each exploded drawing represents a component; the listed parts are the repairable ones of that component.
- Modifications of the lift table is not provided in this manual
The following-up adjustment and the product design changes may result in the revision of the manual, which is not listed in this manual.
- The meanings of "marks" in this part manual O.D external diameter I.D. internal diameter C. modification Y. breakdown drawing Z. not provided seperately X. main part exchange F. not displayed
- Model explanation: BG: product code: manual lift table



List of Wearing Parts

Item NO.	Part name	Part NO.
1	Wheel	0905020104
2	Wheel	0905060004
3	Seal ring 32X45X6	0902060018
4	O-ring 31.5X3.55	0902050059
5	Seal ring	0902070001
6	O-ring 7.5X2.65	0902050011
7	O-ring 65X3.55	0902050108
8	O-ring 32X4	0902050060
9	Bowl-shape pad	0902030079
10	Dust ring DHS14-22-4.5/6	0902040005
11	Seal ring UHS14-22-5	0902030002
12	O-ring 22.4X2.65	0902050046
13	Seal ring	0902070004
14	O-ring 20X2.65	0902050043
15	O-ring 6.9X1.8	0902050007
16	O-ring 10.6X0.8	0902050020

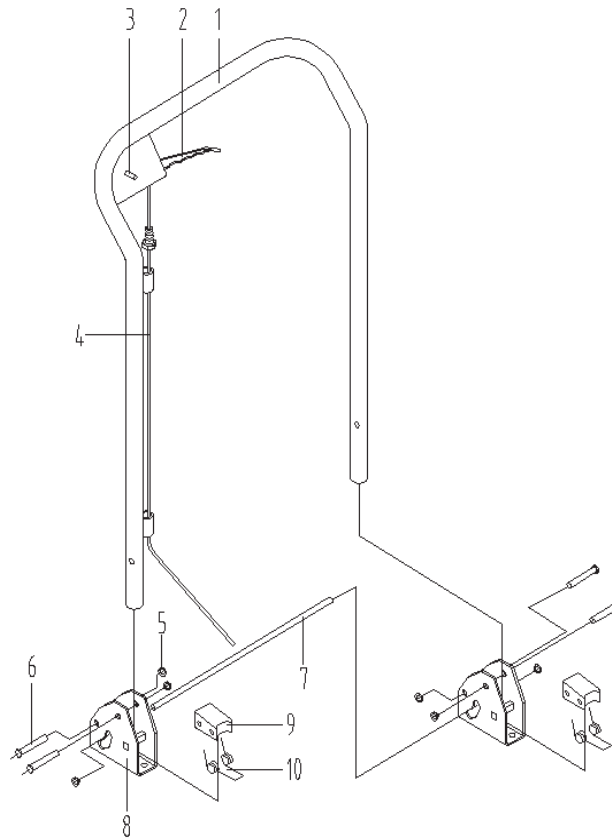
GB-660/1100 General Assembly



Item NO.	Part NO.	Part name	Specification	Q'ty
1	31070201007	Knob assembly		1
2	31020201003	Pedal rod assembly		1
3	0908420031	Screw M8X25		12
4	0908350013	Washer 8		25
5	0908370011	Washer 8		13
6	0908030013	Nut M8		14
7	31070201022	Universal wheel assembly	nylon core PU	2
	31070201023	Universal wheel assembly	iron core PU	
8	31020201032	Lift table frame body		1
9	0901120024	Screw		1
10	31050301055	Screw		1
11	1199400038	Fork arm assembly		1
12	31020201031	Table face assembly		1
13	310302004	Jack		1
14	0908240290	Screw M6X12		4
15	0908370007	Washer 6		4
16	0906230012	Pin		4
17	0906230013	Pin		1
18	0908320013	Circlip for shaft 16		2
19	0905020104	Wheel (Optional)	iron core PU	2
	0905060004	Wheel (standard configuration)	nylon core PU	

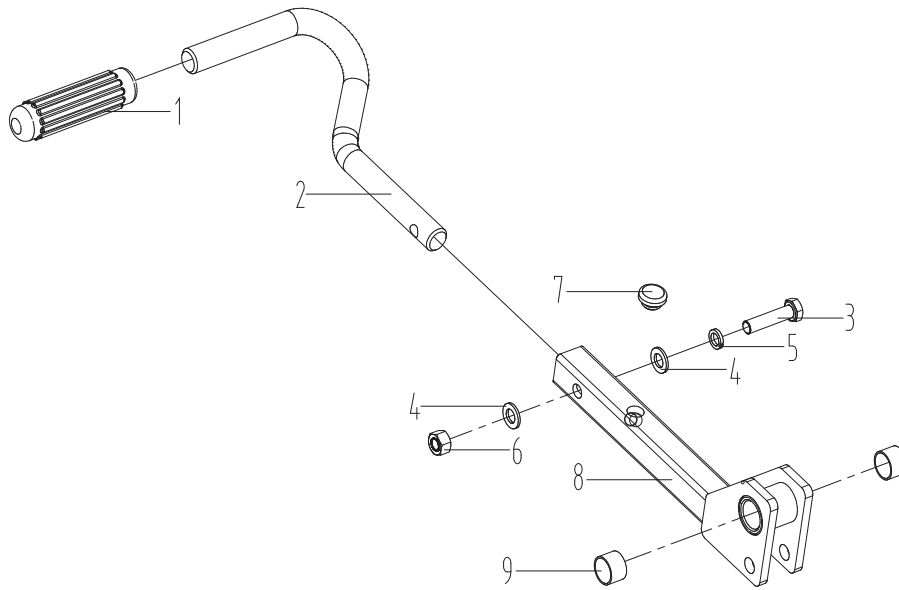
Item NO.	Part NO.	Part name	Specification	Q'ty
20	0909030017	Trimming		4
21	0907020004	Bearing 6203-2RS		4
22	0909020002	Bush		4
23	0909220009	Core pipe		2
24	0906230011	Shaft		2
25	0908320006	Circlip for shaft 12		2
26	0909020013	Retaining ring		1
27	0909020014	Retaining ring		1
28	0908320018	Circlip for shaft 20		2
29	0906230014	Pin		1
30	0908320004	Circlip for shaft 10		2
31	0906230010	Shaft		1
32	0909010008	Shaft		1
33	0909040025	Connecting plate		2
34	0906230009	Shaft		1
35	0907040003	Bearing SF-1-10.06		4

Knob Assembly
Part# 31070201007



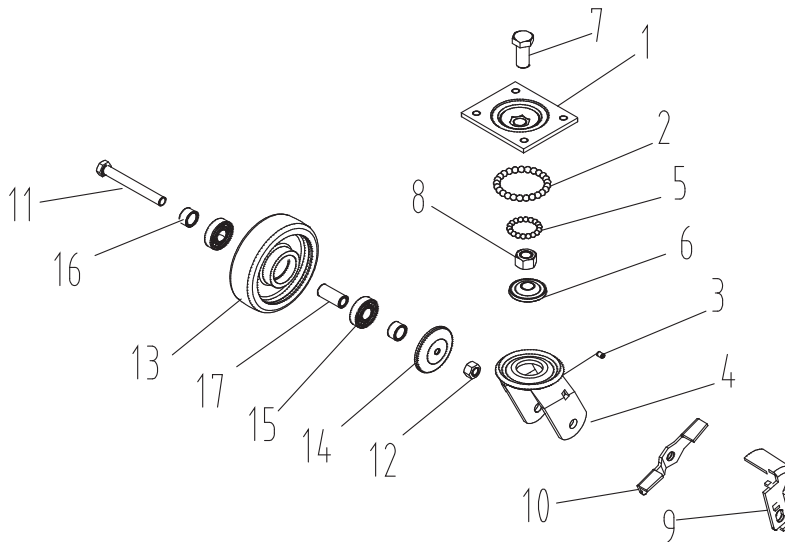
Item NO.	Part NO.	Part name	Q'ty
1	1199400005	Handle assembly	1
2	0909170004	Knob	1
3	0908500038	Pin standard type6X30 (standard part)	1
4	0909180025	Shaft	1
5	0908380004	Circlip	4
6	0906160001	Pin 8X45	4
7	1199400034	Pin	1
8	1199400002	Fold frame	2
9	0909040018	Pressing catch	2
10	0903130006	Spring	2

Pedal Rod Assembly
Part#



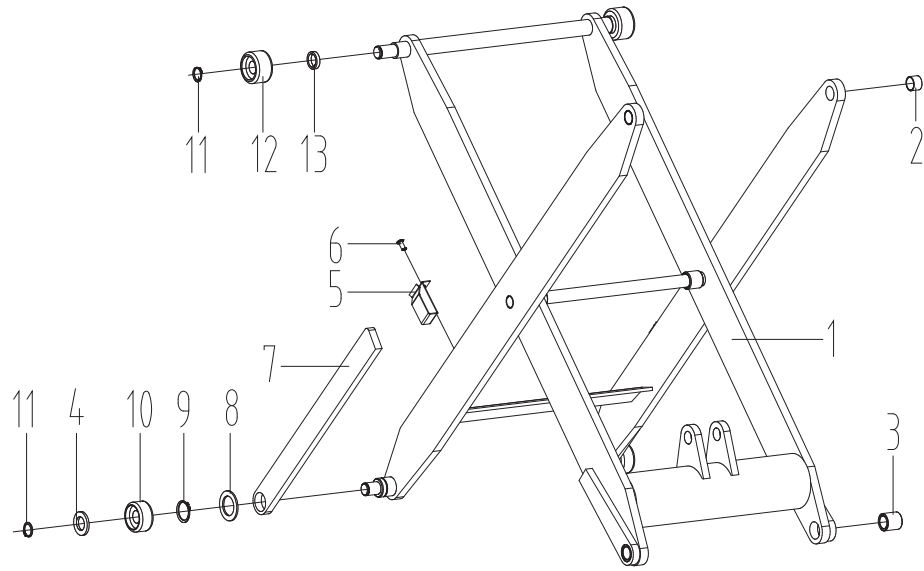
Item NO.	Part NO.	Part name	Q'ty
1	904120002	Pedal rod sleeve	1
2	0906230097	Pedal rod	1
3	0908420034	Screw M8X35	1
4	0908350013	Washer 8	2
5	0908370011	Washer 8	1
6	0908030013	Nut M8	1
7	0904120004	Crash pad	1
8	31020201030	Square rod assembly	1
9	0907040024	Bearing SF-1-20.12	2

Universal Wheel Assembly
Part# 31070201022 nylon core PU or
Part# 31070201023 iron core PU



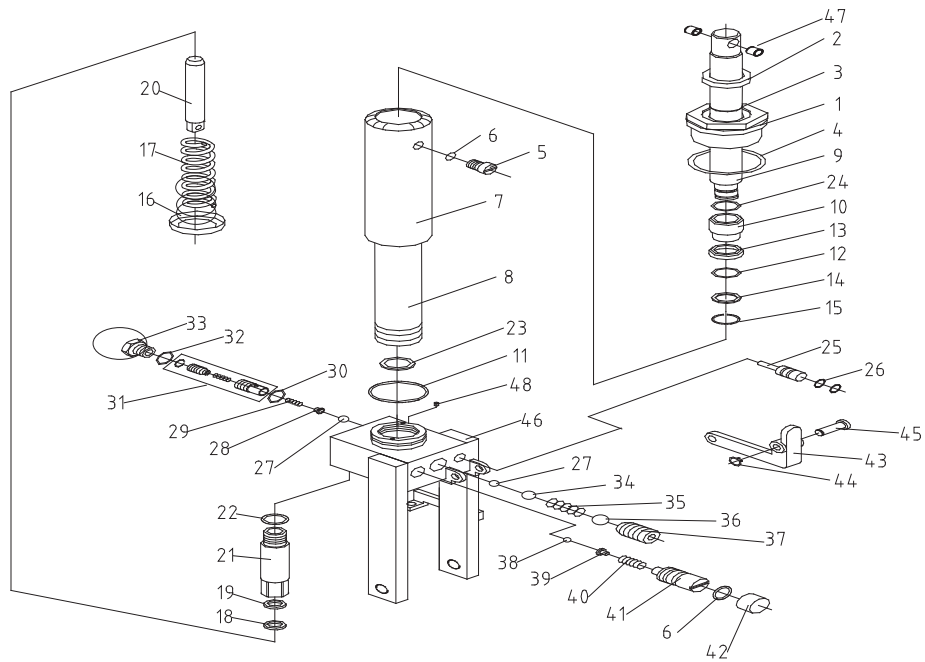
Item NO.	Part NO.	Part name	Specification	Q'ty
1	0905080005 (provided in whole)	Upper cover plate		1
2		Steel ball 8		25
3		Oiler M6		1
4		Wheel carriage assembly		1
5		Steel ball 1/4		18
6		Lower raceway plate		1
7		Screw M16X25		1
8		Nut M16		1
9		Brake plate		1
10		Pedal		1
11		Screw M12X100		1
12		Nut M12		1
13	0905020104	Wheel (optional)	QT450+PU	1
	0905060004	Wheel (standard configuration)	MC nylon+PU	
14	0909030017	Trimming		2
15	0907020004	Bearing 6203-2RS		2
16	0909020007	Retaining ring		2
17	0909220010	Shaft		1

Fork Arm Assembly
Part# 1199400038



Item NO.	Part NO.	Part name	Q'ty
1	31020201050	Fork arm welding	1
2	0907040014	Bearing SF-1-16.12	2
3	0907040090	Bush	2
4	0908360004	Washer 16	2
5	0909040019	Lock catch	2
6	0908280012	Screw M5X8	2
7	1199400039	Support rod	2
8	0909030007	Washer	2
9	0908320062	Circlip for shaft 24	2
10	0909120004	Lower pulley	2
11	0908320013	Circlip for shaft 16	4
12	0909120003	Upper pulley	2
13	0909020002	Bush	2

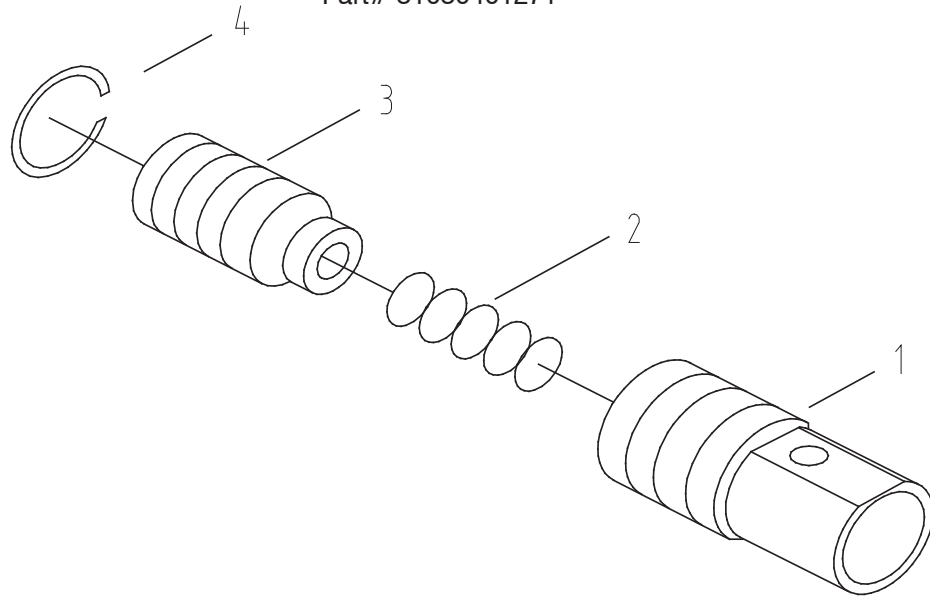
Jack Assembly
Part# 310302004



Item NO.	Part NO.	Part name	Specification	Q'ty
1	1109400002	Hood		1
2	0902060018	Seal ring 32X45X6		1
3	0902050059	O-ring 31.5X3.55		1
4	0902070001	Seal ring		1
5	0901120023	Screw		1
6	0902050011	O-ring 7.5X2.65		2
7	1131400002	Sleeve		1
8	1113400002	Oil cylinder		1
9	0901010049	Piston rod		1
10	1112400002	Sliding sleeve		1
11	0902050108	O-ring 65X3.55		1
12	0902050060	O-ring 32X4		1
13	0902030079	Bowl-shape pad		1
14	0909030007	Washer		1
15	098330032	Circlip for shaft 25		1
16	0909060002	Spring seat		1
17	0903130009	Spring		1
18	0902040005	Dust ring DHS14-22-4.5/6		1
19	0902030002	Seal ring UHS14-22-5		1
20	0901030016	Pump core		1
21	0901020020	Pump cylinder		1
22	0902050046	O-ring 22.4X2.65		1
23	0902070004	Seal ring		1
24	0902050043	O-ring 20X2.65		1
25	0901090010	Striker pin		1
26	0902050007	O-ring 6.9X1.8		2
27	0907010012	Steel ball 1/4		2
28	0901100013	Spring seat		1

Item NO.	Part NO.	Part name	Specification	Q'ty
29	0903130019	Spring		1
30	0902050020	O-ring 10.6X0.8		1
31	31030401273	Damping valve	aperture specification 1	1
32	0902010009	Washer 20		1
33	0901120015	Screw		1
34	0907010015	Steel ball 3/8		1
35	0903130012	Spring		1
36	0907010021	Steel ball 1/2		1
37	0908220005	Screw M16X18		1
38	0907010009	Steel ball 3/16		1
39	0901110020	Relief valve seat		1
40	0903130005	Spring		1
41	0901120002	Screw		1
42	0901150012	Guard sleeve		1
43	1120460001	Lever		1
44	0908320003	Circlip for shaft 8		1
45	0906040001	Shaft		1
46	31020201026	Base assembly		1
47	0907040018	Bearing SF-1-16.20		1
48	0540059	Magnetic steel 10X3		1

Damping Valve
Part# 31030401271



Item NO.	Part NO.	Part name	Specification	Q'ty
1	0901070009	Valve body		1
2	0903130028	Spring		1
3	0901080009	Valve core	aperture specification 1	1
4	0908310004	Circlip for hole 9		1

BLUE GIANT[®]
BLUE GIANT EQUIPMENT CORPORATION

Corporate 410 Admiral Blvd
Mississauga, ON, Canada L5T 2N6
t 905.457.3900 **f** 905.457.2313

USA 9201 National Turnpike
Louisville, KY 40118
www.bluegiant.com